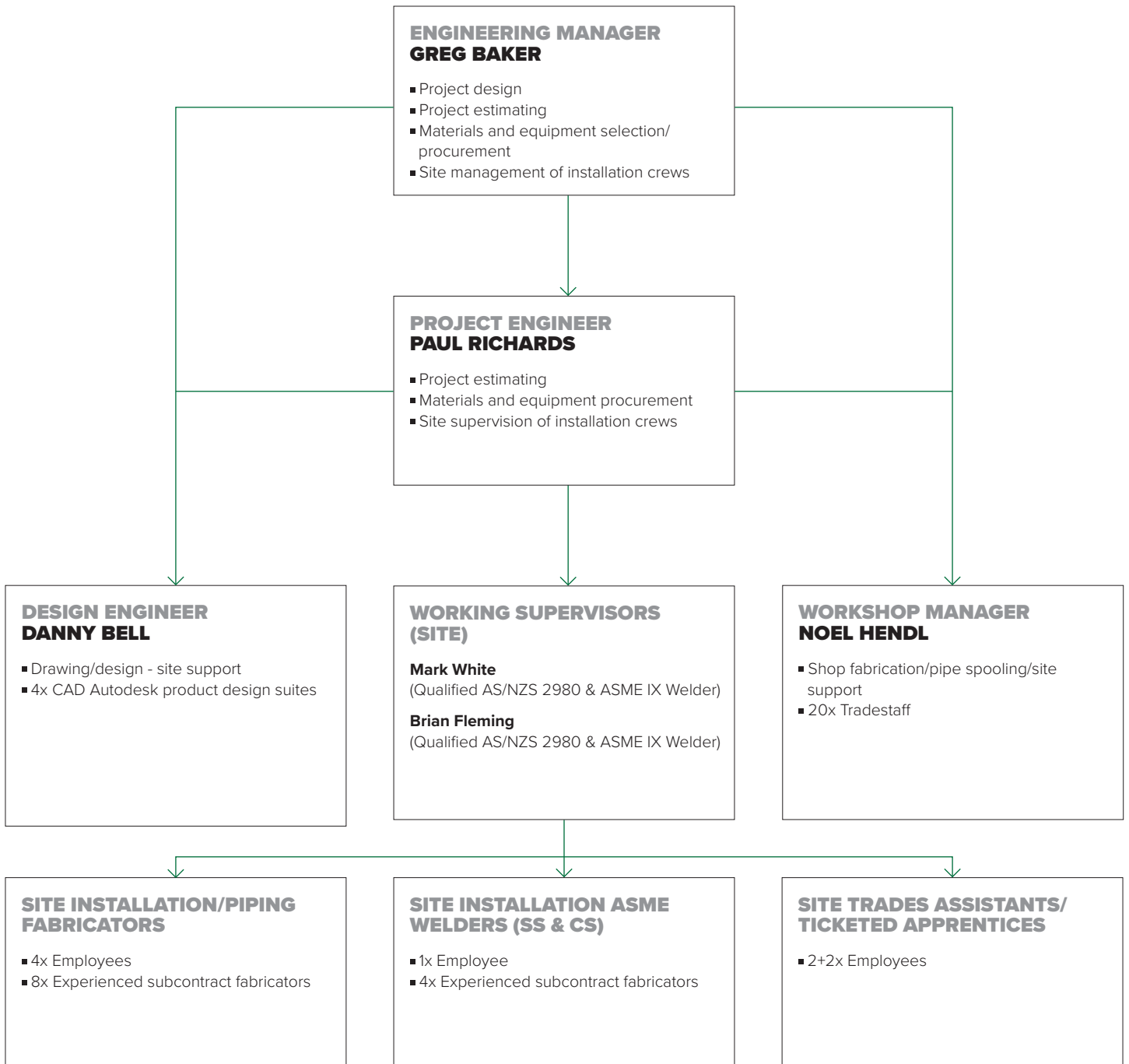


SITE ORGANISATIONAL/ CAPABILITY CHART

Best Quality - On Time - Every Time



NOTES

- Project capability small to medium (up to \$5million) - total current site labour resource: 22 men
- Welding processes: TIG, Orbital and Sigma Galaxy 400SV Pulse MIG IAC MJC weld spooling with manipulator
- 20' and 40' site workshop/material storage containers and shelter tents available
- Site portacom type lunch rooms/office available
- All terrain JCB with EWP available for working at heights
- Personnel with training to cover all possibilities on site (e.g. confined space, height safety, hazard ID/permit receiver, first aid, etc).
- Equipment vessels, ductwork and tank installation
- Vessel and tank inspections, crack testing, NDT work and repair work