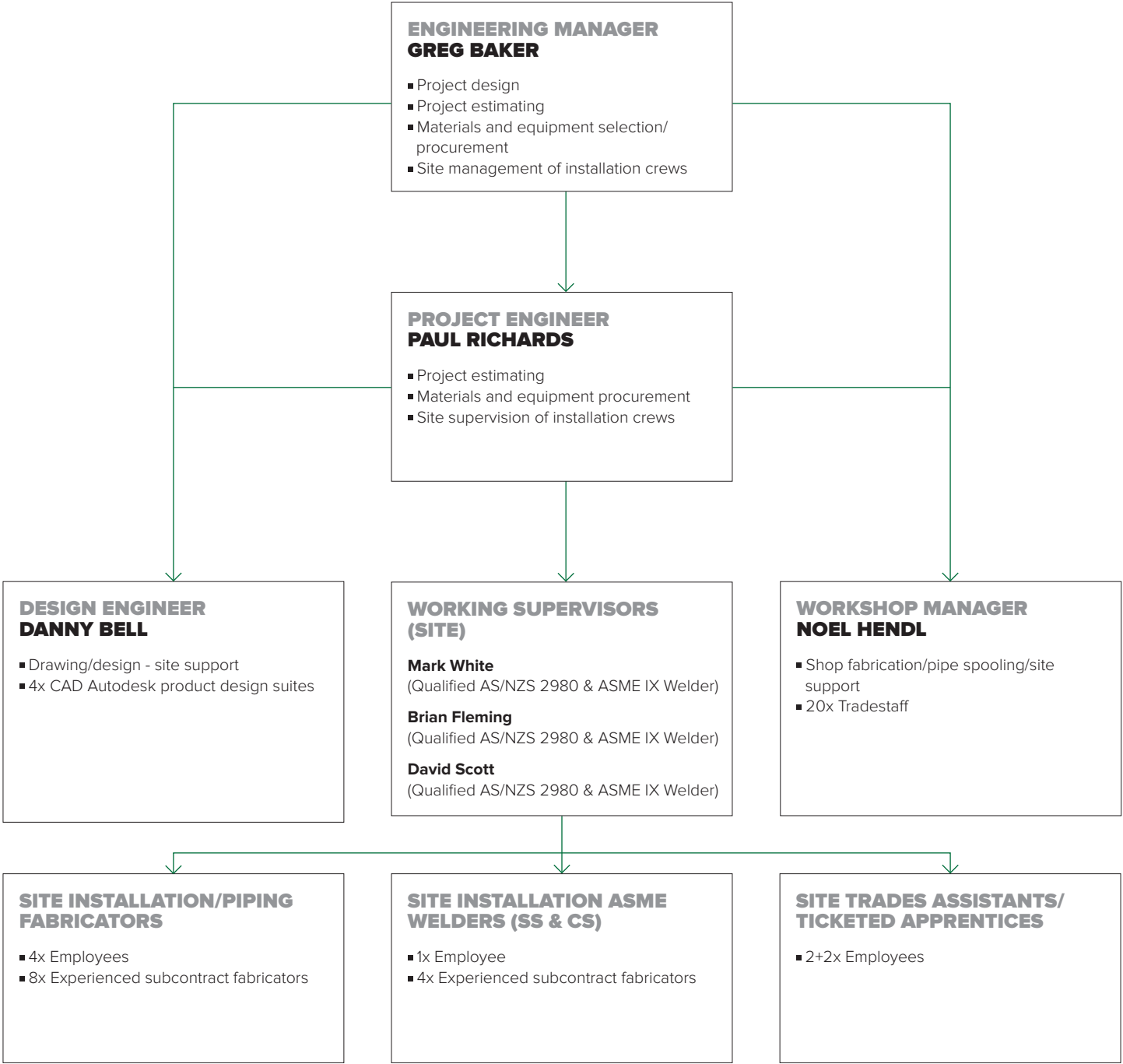


SITE ORGANISATIONAL/ CAPABILITY CHART



NOTES

1. Project capability small to medium (up to \$5million) - total current site labour resource: 22 men
2. Welding processes: TIG, Orbital and Sigma Galaxy 400SV Pulse MIG IAC MJC weld spooling with manipulator
3. 20' and 40' site workshop/material storage containers and shelter tents available
4. Site portacom type lunch rooms/office available
5. All terrain JCB with EWP available for working at heights
6. Personnel with training to cover all possibilities on site (e.g. confined space, height safety, hazard ID/permit receiver, first aid, etc).
7. Equipment vessels, ductwork and tank installation
8. Vessel and tank inspections, crack testing, NDT work and repair work