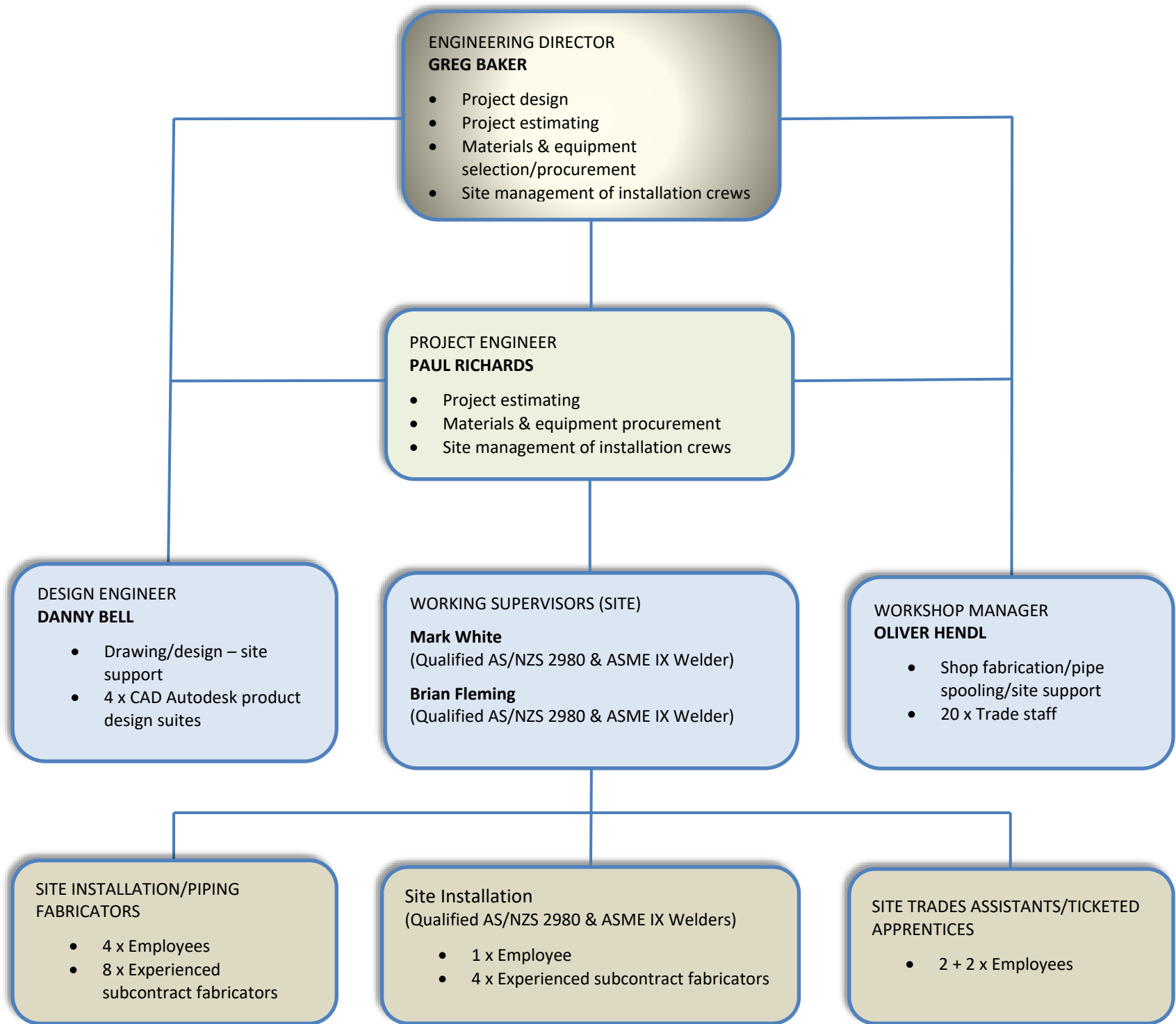


Quality Procedure

Site Organisational/Capability Chart



NOTES

- Project capability small to medium (up to \$5 million) – total current site Labour resource: 22 men
 - Welding processes. TIG, Orbital and Sigma Galaxy 400SV Pulse MIG IAC MJC weld Spooling with manipulator
 - 20’ and 40’ site workshop/material storage Containers and shelter tents available
 - Site portacom type lunch rooms/office available
 - All terrain JCB with EWP available for working at heights
- Personnel with training to cover all possibilities on site (e.g. confined space, height safety, hazard ID/ permit receiver, first aid, etc).
 - Equipment vessels, ductwork, and tank installation
 - Vessel and tank inspections, crack testing, NDT work and repair work